

WGS 84 POSITIONS can be plotted directly on this chart

© Copyright 2017. All rights reserved. No part of this product may be reproduced in any form (including photocopying or by electronic means) without prior permission

# RIVER HUMBER OLD HARBOUR TO BARTON HAVEN

DEPTHS IN METRES

SCALE 1 : 10000

SURVEYED BY  
Harbour Master, Humber  
ASSOCIATED BRITISH PORTS  
19th May 2017

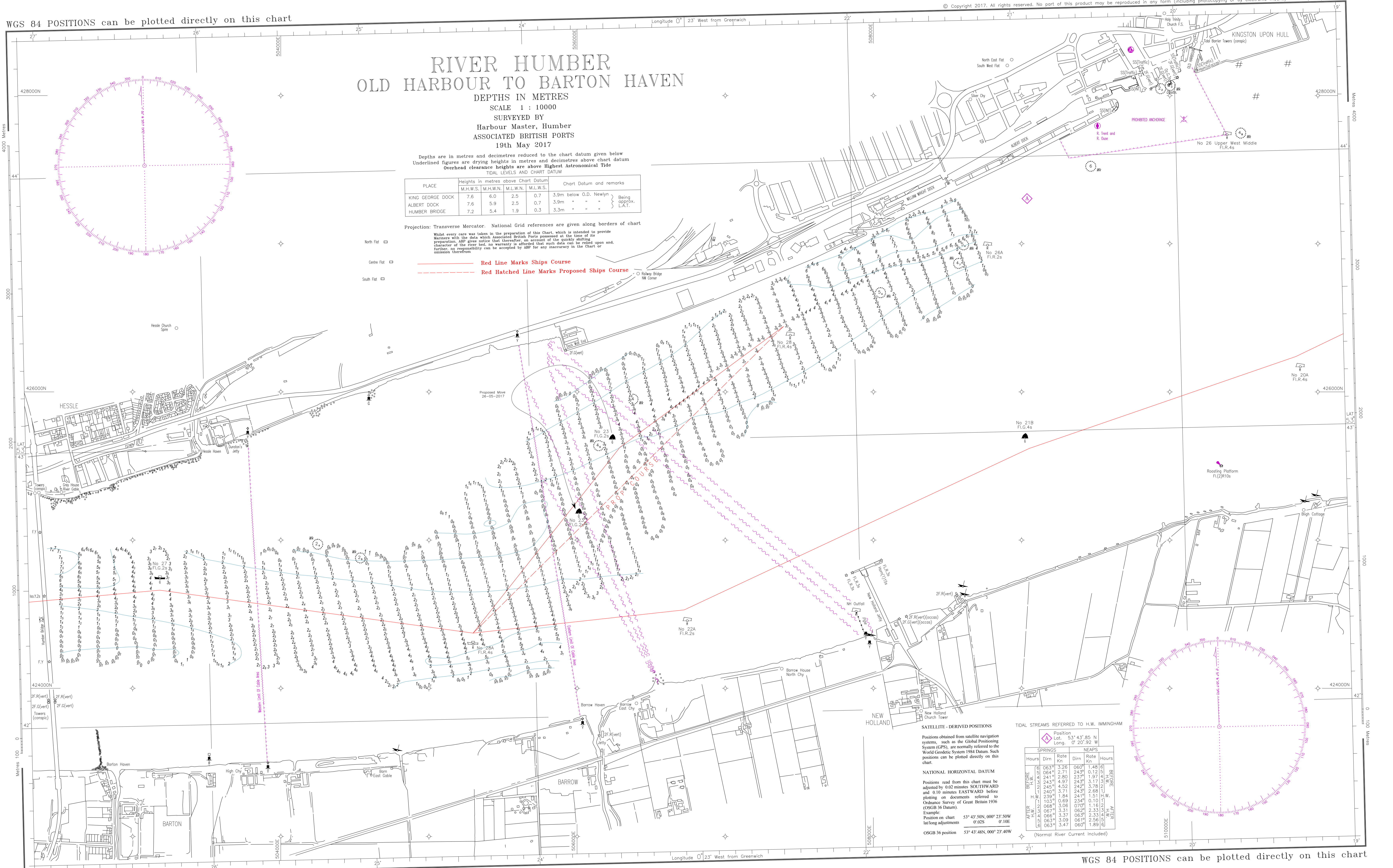
Depths are in metres and decimetres reduced to the chart datum given below  
Underlined figures are drying heights in metres and decimetres above chart datum  
Overhead clearance heights are above Highest Astronomical Tide

PLACE	Heights in metres above Chart Datum				Chart Datum and remarks
	M.H.N.S.	M.H.W.N.	M.L.W.N.	M.L.W.S.	
KING GEORGE DOCK	7.6	6.0	2.5	0.7	3.9m below O.D. Newlyn
ALBERT DOCK	7.6	5.9	2.5	0.7	3.9m - - - } Being approx. L.A.T.
HUMBER BRIDGE	7.2	5.4	1.9	0.3	3.3m - - - }

Projection: Transverse Mercator. National Grid references are given along borders of chart

What every care was taken in the preparation of this Chart, which is intended to provide Mariners with the data which Associated British Ports possessed at the time of its preparation, ABP give notice that thereafter, on account of the quickly shifting character of the river bed, no warranty is afforded that such data can be relied upon and, further, no responsibility can be accepted by ABP for any inaccuracy in the Chart or omission therefrom

- North Flat □
- Centre Flat □
- South Flat □
- Red Line Marks Ships Course
- Red Hatched Line Marks Proposed Ships Course



**SATELLITE - DERIVED POSITIONS**  
Positions obtained from satellite navigation systems, such as the Global Positioning System (GPS), are normally referred to the World Geodetic System 1984 Datum. Such positions can be plotted directly on this chart.

**NATIONAL HORIZONTAL DATUM**  
Positions read from this chart must be adjusted by 0.02 minutes SOUTHWARD and 0.10 minutes EASTWARD before plotting on documents referred to Ordnance Survey of Great Britain 1936 (OSGB 36 Datum).  
Example:  
Position on chart 53° 43' 50N, 000° 23' 50W  
lat/long adjustments 0.02S 0.10E  
OSGB 36 position 53° 43' 48N, 000° 23' 40W

TIDAL STREAMS REFERRED TO H.W. IMMINGHAM

SPRINGS	Position		NEAPS		HOURS
	Dirn	Rate Kn	Dirn	Rate Kn	
BEFORE H.W.	063°	3.26	060°	1.48	06
	084°	2.71	243°	0.12	05
	241°	2.80	237°	1.97	04
	243°	4.97	243°	3.17	03
	243°	4.52	243°	3.78	02
	1240°	3.71	243°	2.68	01
H.W.	236°	1.84	241°	1.51	H.W.
	103°	0.69	234°	0.10	01
	088°	3.06	070°	1.16	00
	087°	3.31	062°	2.33	00
	066°	3.37	063°	2.33	00
AFTER H.W.	063°	3.09	061°	2.56	00
	063°	3.47	060°	1.83	00

(Normal River Current Included)

WGS 84 POSITIONS can be plotted directly on this chart